



台  
達  
電  
子

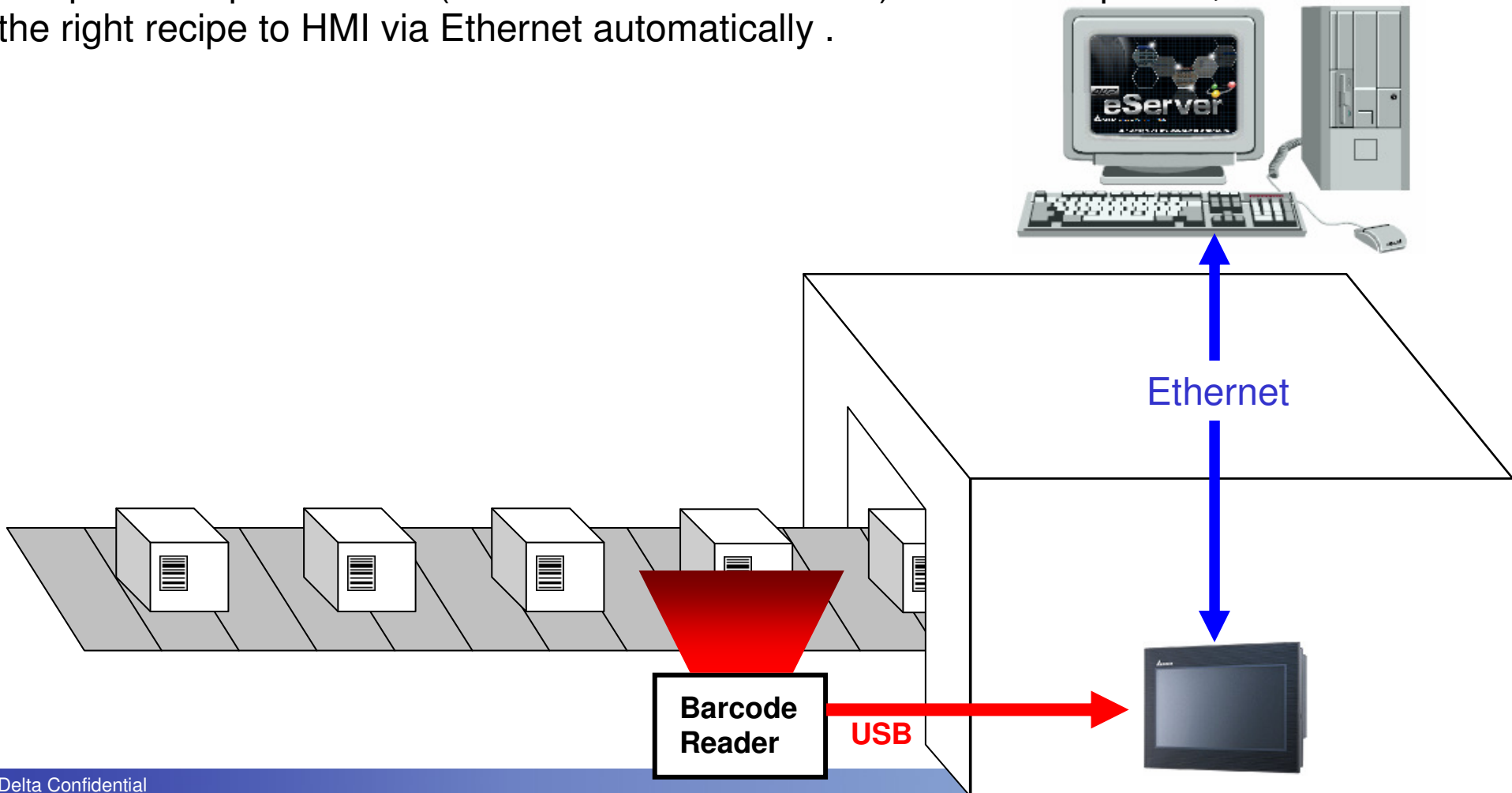
Production-line application- Recipe download  
automatically using eServer



# Structure

In a production line , Delta HMI is able to connect with the barcode reader and then receive the product info to see which model of product is producing right now.

We can have all the recipe file (\*.rcp) in the PC at the remote side , and then use eServer to compare the product info (read from barcode reader) and the recipe file , and then download the right recipe to HMI via Ethernet automatically .

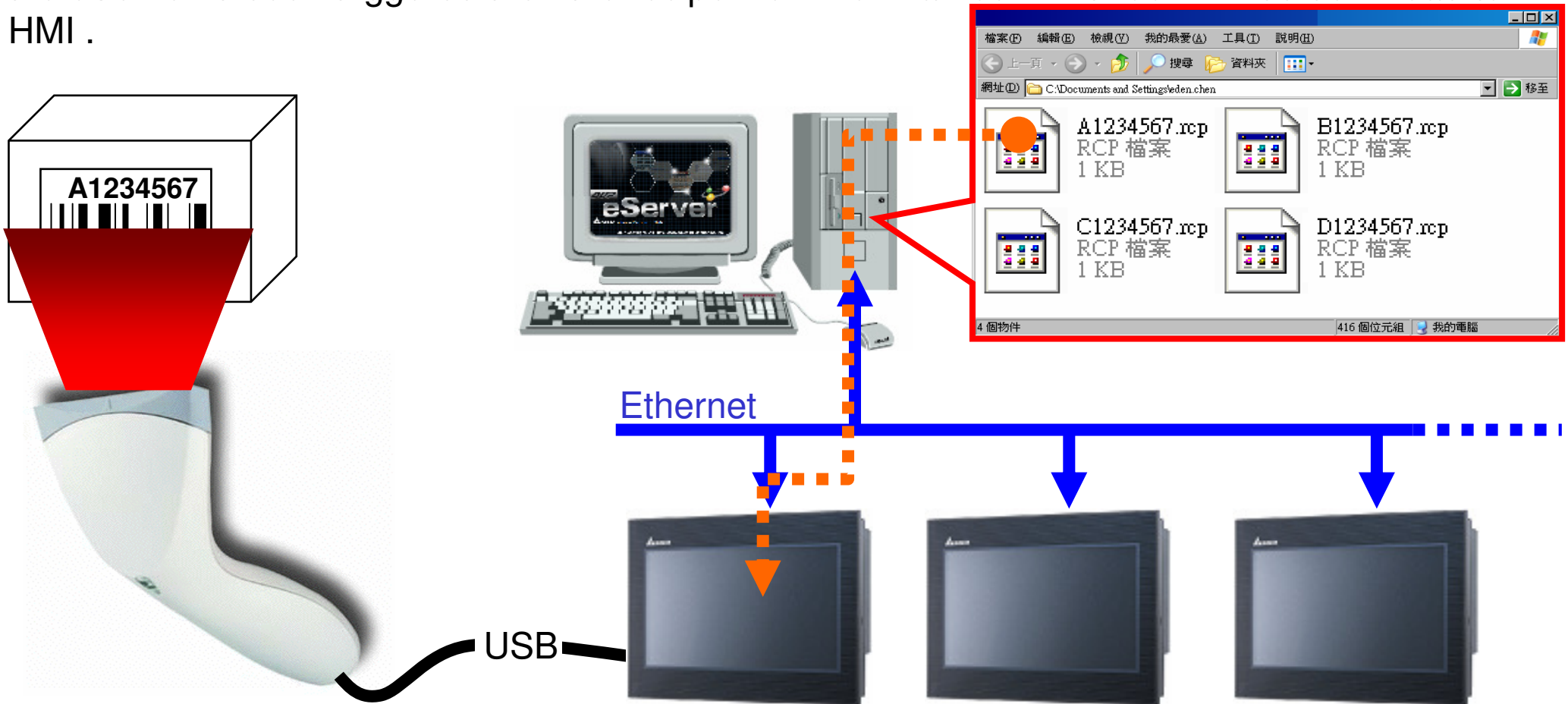




# Structure

User have to define the file name for each recipe , and eServer will compare that file name and the barcode info , and then download the recipe to HMI .

For example , one of producing model need to be produced by recipe A1234567 , then we should have a barcode with a info like “A1234567” on that model during producing , later when the eServer is been triggered then the recipe file which named A1234567 will be download to HMI .





# HMI setting

## Recipe setting

There're 3 functions need to be setup in HMI , the 1st one is recipe function , the 2nd one is Ethernet communication and the last one is that eServer/eRemote has to be enabled.

**Recipe setting** : building the recipe table according to the requirement , here I assume the table size is 5\*10 .

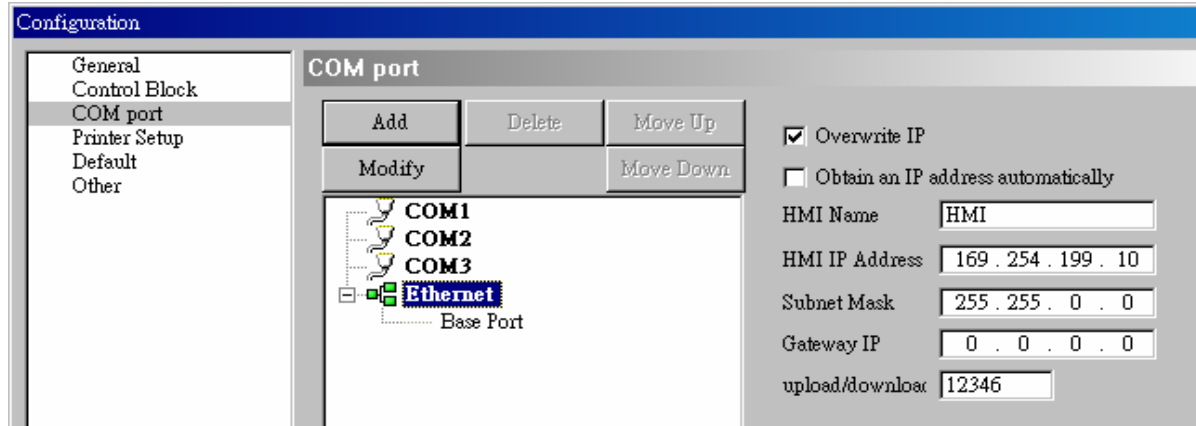
	W1	W2	W3	W4	W5
1	1	2	3	4	5
2	2	3	4	5	6
3	3	4	5	6	7
4	4	5	6	7	8
5	5	6	7	8	9
6	6	7	8	9	10
7	7	8	9	10	11
8	8	9	10	11	12
9	9	10	11	12	13
10	10	11	12	13	14



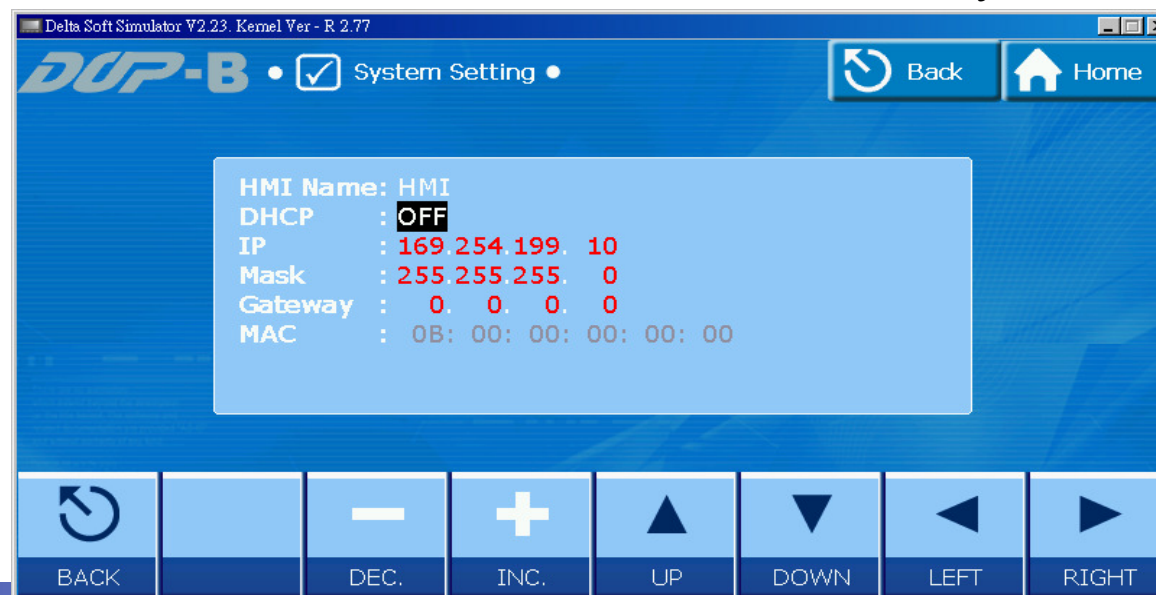
# HMI setting

## Ethernet setting

**Ethernet setting** : the IP address of HMI has to be defined .



or we can defined the IP address of HMI in the system menu

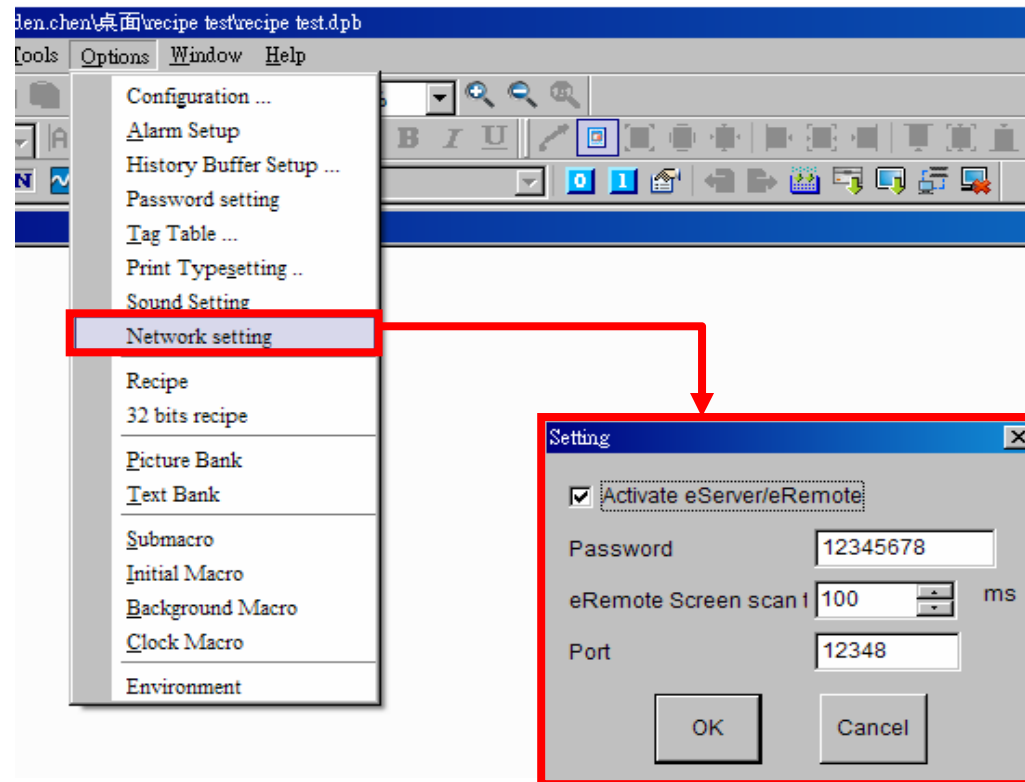




# HMI setting

## eServer/eRemote enable

**Enable eServer/eRemote** : in option → network setting → activate eServer/eRemote , and give a password that needed during connection .



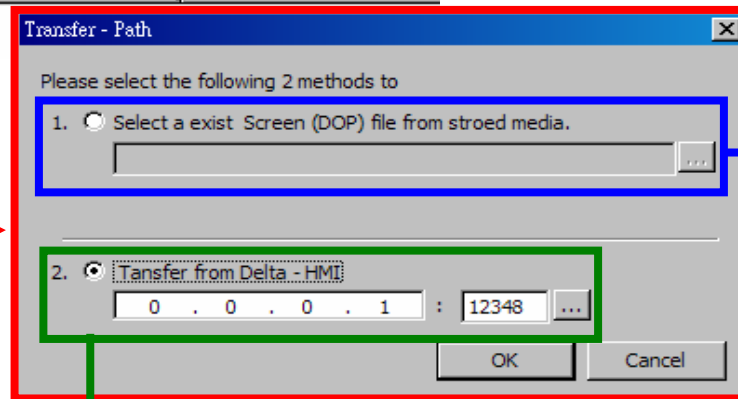
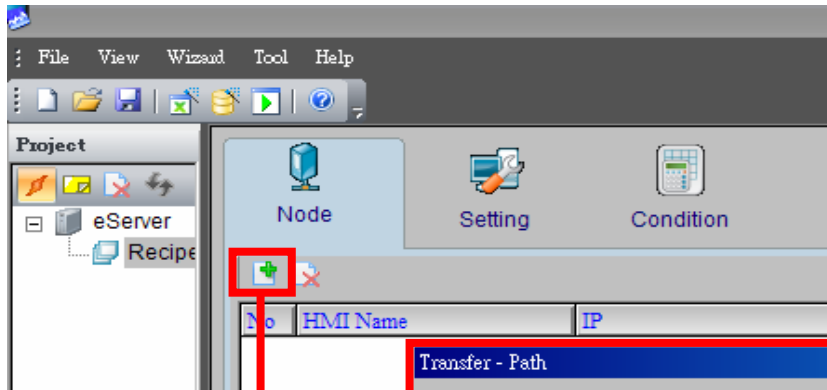




# eServer setting

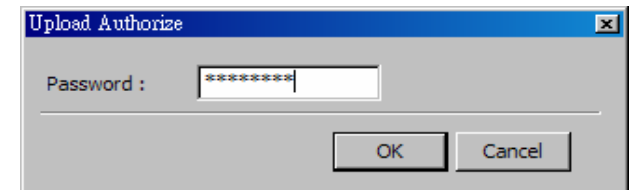
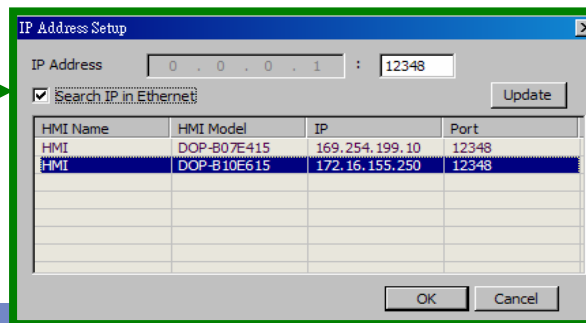
## Node setting

Execute eServer then choose Wizard → recipe access , then the setting page will be pop out , the node has to be set first .



Select a exist screen file from PC

Get the screen file from HMI at remote side via Ethernet



Enter the password for connection



# eServer setting

## Recipe export

In recipe export , when the mode is set to variance , that means the downloading recipe is decided by the file name .

No	Usage	Name	Type	HMI Name	File Name	File Name Length	Controller	Source Path
1	<input checked="" type="checkbox"/>	Export16(1)	16 bits	HMI	\$1000	8	Internal Memory	C:\recipe test\
2	<input type="checkbox"/>	Export32(1)	32 bits	HMI	None	1		

The path that save rcv file

The length of file name (barcode) ,  
here I assume 8 Bytes (4 Words)

The register that put the file name character  
(barcode) in it , here I assume \$1000





# eServer setting

## Condition setting

When the condition is true then the eServer will do the export job , the condition can be a constant time or can be triggered by a bit .

Name	Type	HMI Name	Detail	Format	Controller
Export16(1)	Trigger	HMI	\$200.0	Rising edge	Internal Memory

When the bit \$200.0 in HMI is triggered , eServer will export the recipe

Triggered by a bit

So every time when \$200.0 is triggered , then eServer will check if any rcp file have the same name with the string in \$1000 , if so , that rcp file will be download to HMI automatically .

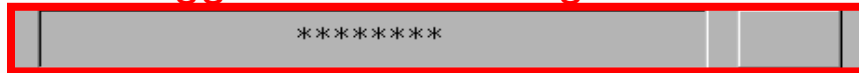


# The attached example file

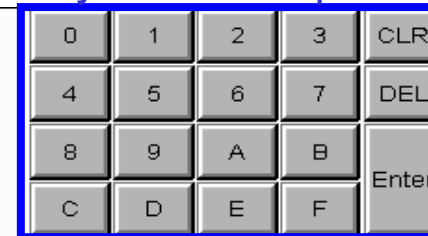
Use the attached file “recipe test.rar” as a example , please un-rar the file then you will get a folder called “recipe test” , place that folder to c:\ , there’re 6 files in that folder , HMI program , eServer project file and 4 rcp files for test.

The HMI screen goes like below :

Barcode input element , barcode written to \$1000 , and the \$200.0 will be triggered after writing .



If you don't have a barcode reader , you may test with this keyboard temporarily .



####	####	####	####	####
####	####	####	####	####
####	####	####	####	####
####	####	####	####	####
####	####	####	####	####
####	####	####	####	####
####	####	####	####	####
####	####	####	####	####
####	####	####	####	####
####	####	####	####	####

Recipe table , after the exporting , the value in this table will be changed.

Thank you

