
3.1 FTP Server Function

FTP Server enables users to download alarms, historical information and recipe from USB Disk or SD storage device to PC. It also allows users to upload the file from PC to USB Disk or SD storage device.

Supported HMI

- Network type

Supported connection methods

- Software for file transmission
- Windows explorer
- DOS command line

Connection limit

- Maximum 3 on-line clients at the same time.
- FTP Server will be automatically disconnected when you leave it unused for 90 seconds.

Logon methods

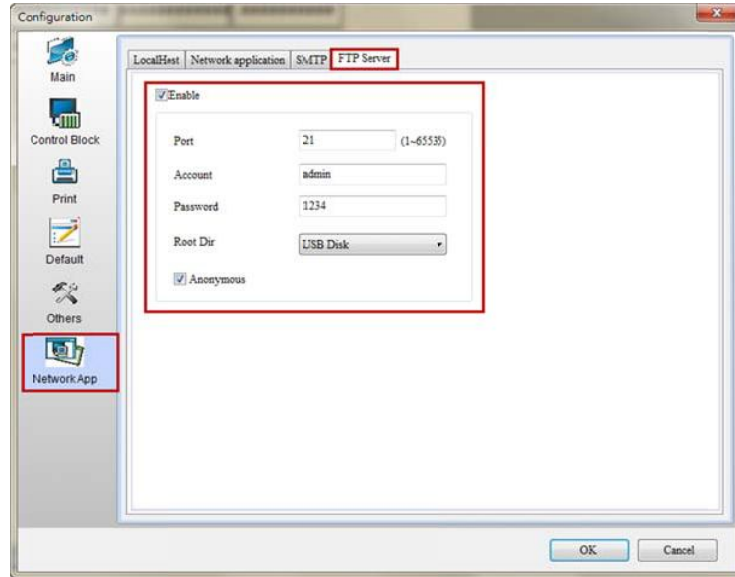
- Anonymous logon
 - Users cannot add directory.
 - Users cannot upload files.
 - Users cannot download files.
 - Users cannot delete files.
 - Users can change the filenames.
- Account logon
 - Users can add directory.
 - Users can upload / download files.
 - Users can delete files.
 - Users can change the filenames.

File transmission rules

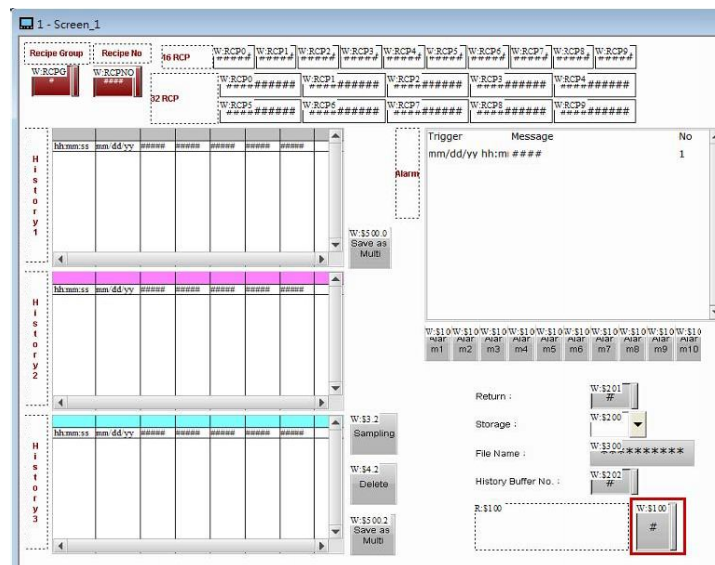
- Transmission flow is unlimited.
 - During the file transmission, if the connection is failed, the file is stopped being transmitted. However, once the connection is OK, the system will continue to transmit the file again.
 - No file size limit for transmission.
 - Length limit of the filename is 260 bytes.
 - It is allowed to change the filename.
 - Chinese file name is supported.
-

- File encryption is not supported.
- It supports positive and negative mode for connection
- During FTP transmission, users can go to or exit the operation from system directory.

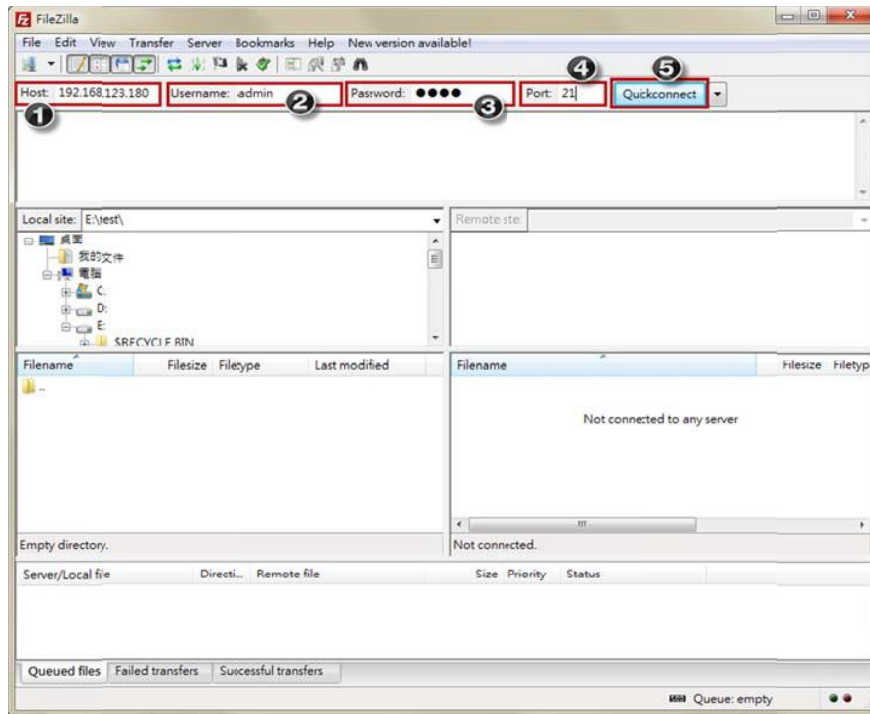
Step 1: Go to [Option] → [Configuration] → [Network App] → [FTP Server] and set the value for FTP Server connection.



Step 2: Edit the information of alarms, history and recipe and set the non-volatile area to USB or SD storage device. Then, download the screen and insert the USB Disk to HMI. Trigger the [Save as Multi] button and select USB as the external device with the filename of ALL. And set \$100 address to 1 to export the 16-bit recipe.

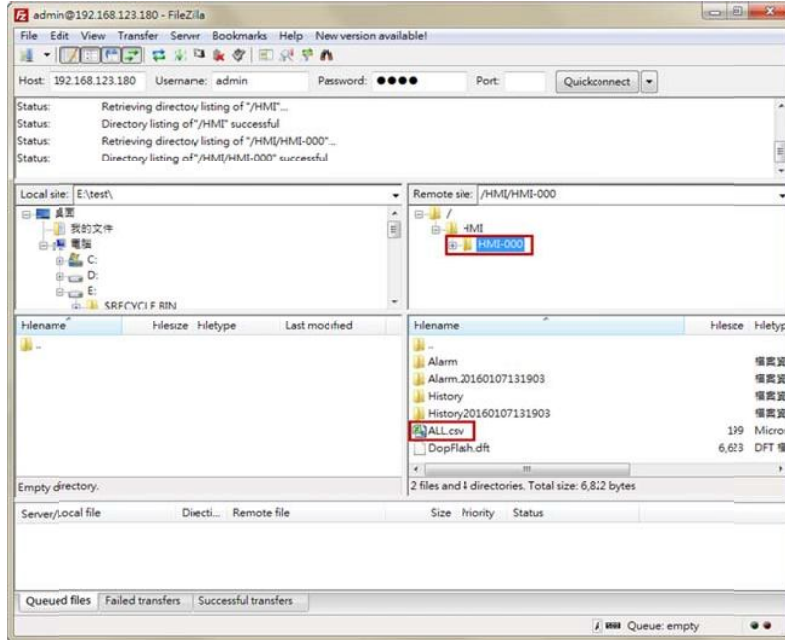


Step 3: Use FTP Client software to upload/download the file or use Windows Explorer or DOS Command line for connection. In the following steps, FileZilla, the software for file transmission is applied as the example. This software is free to download at <https://filezilla-project.org/download.php>. Please run FileZilla software after installation.

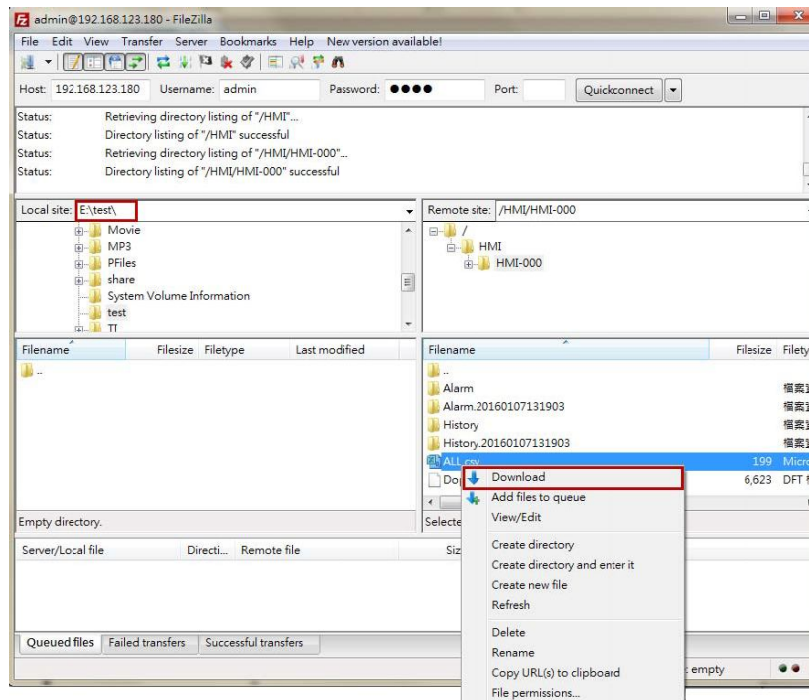


No.	Name	Descriptions
❶	Host	Enter HMI's IP address. In this example, we enter 192.168.123.180.
❷	Username	Enter the username, admin, which is identical with the one set in the software.
❸	Password	Enter the same password, 1234 that is the same as the software setting.
❹	Port	Enter the port, 21 (identical to the software setting.)
❺	Quickconnect	Before enabling this button, please make sure the setting of column 1 ~ 4 is complete.

Step 4: After the connection is built, the screen will be shown as below.

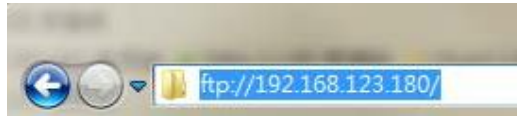


Download the ALL.csv recipe file exported in Step 2 to the specified path in PC via FileZilla.

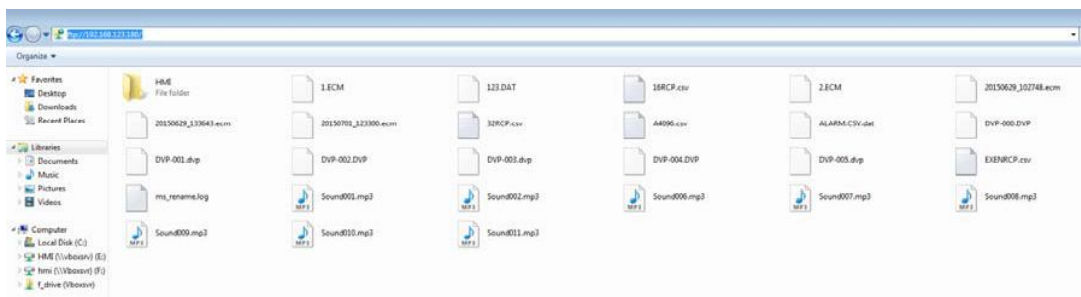


■ The connection method of Windows Explorer:

Please open Windows Explorer and enter <ftp://192.168.123.180/>. Then, enter your account and password to log on FTP.

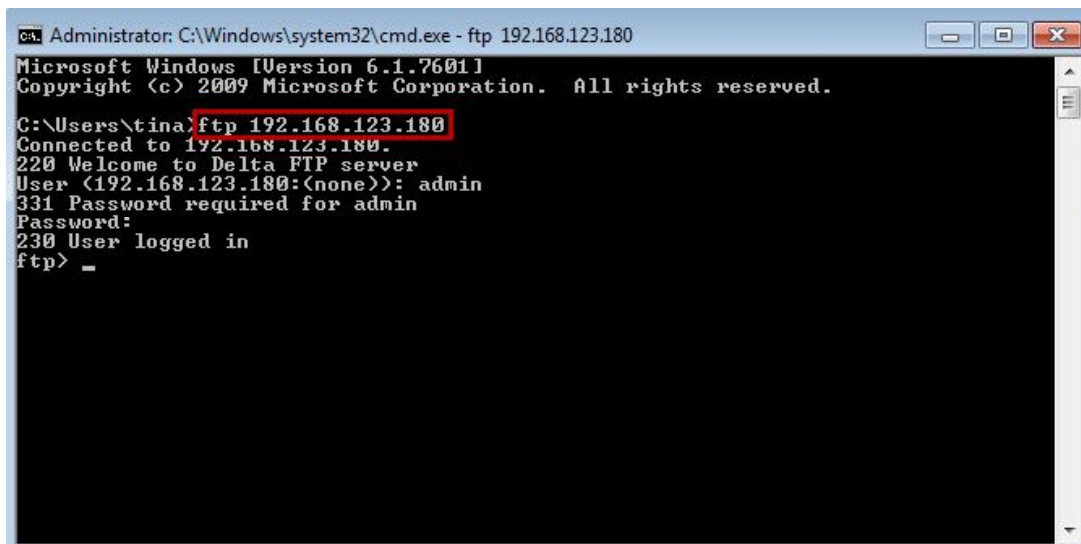


You can see all files that stored in USB.

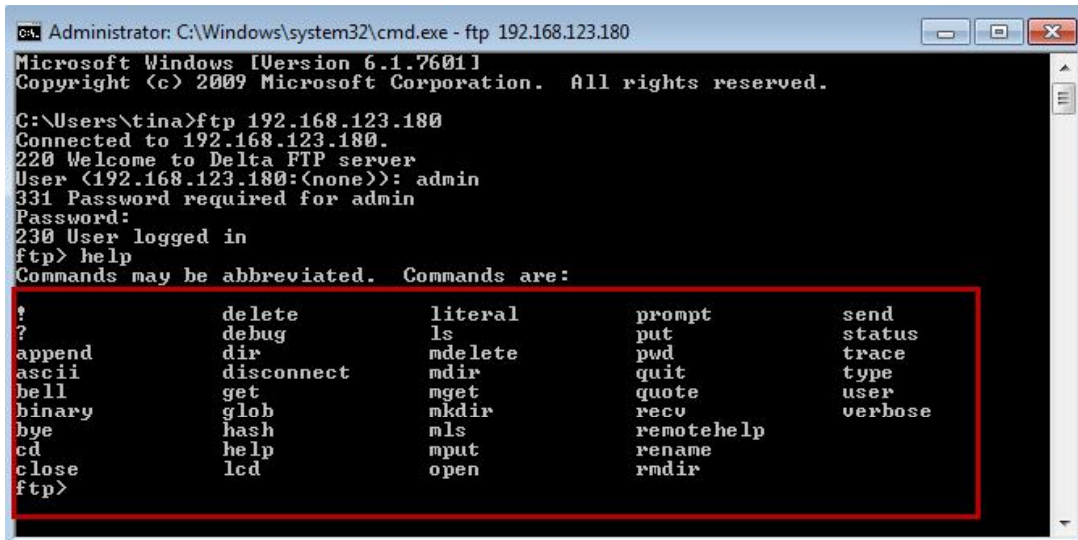


■ DOS Command line

Enter [ftp 192.168.123.180](ftp://192.168.123.180/) in Command Prompt (cmd) and enter your user name, admin and password, 1234 to connect to FTP.



With ftp command, users can view all supported commands via the help function.

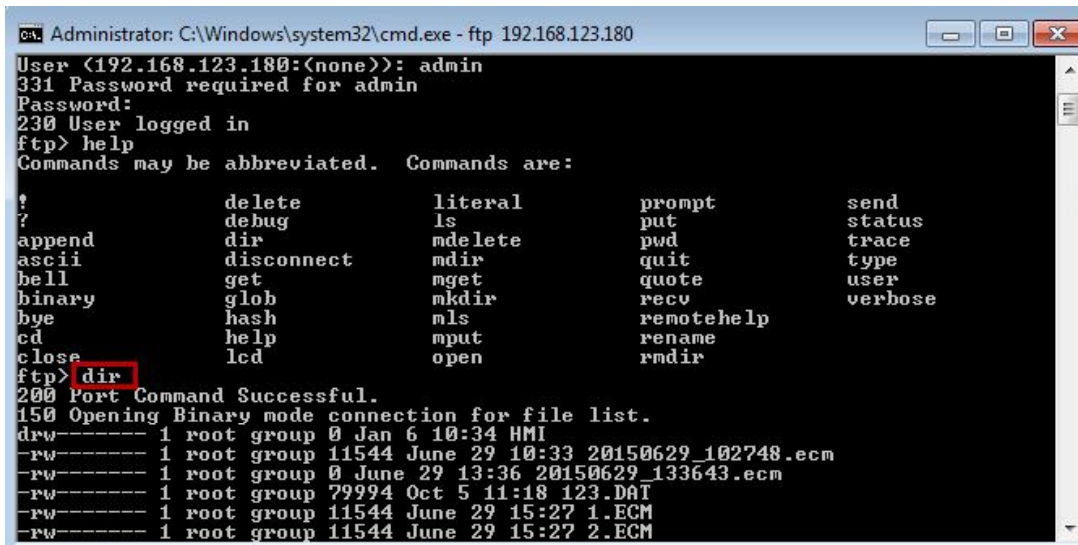


```
Administrator: C:\Windows\system32\cmd.exe - ftp 192.168.123.180
Microsoft Windows [Version 6.1.7601]
Copyright (c) 2009 Microsoft Corporation. All rights reserved.

C:\Users\tina>ftp 192.168.123.180
Connected to 192.168.123.180.
220 Welcome to Delta FTP server
User (192.168.123.180:(none)): admin
331 Password required for admin
Password:
230 User logged in
ftp> help
Commands may be abbreviated.  Commands are:

?          delete      literal     prompt      send
?          debug       ls          put         status
append    dir         mdelete    pwd         trace
ascii     disconnect  mdir       quit        type
bell      get         nget       quote       user
binary    glob        mkdir      recu       verbose
bye       hash        nls        remotehelp
cd        help        mput       rename
close     lcd         open       rmdir
ftp>
```

Enter dir command. And the screen will show all files that currently stored in USB.



```
Administrator: C:\Windows\system32\cmd.exe - ftp 192.168.123.180
User (192.168.123.180:(none)): admin
331 Password required for admin
Password:
230 User logged in
ftp> help
Commands may be abbreviated.  Commands are:

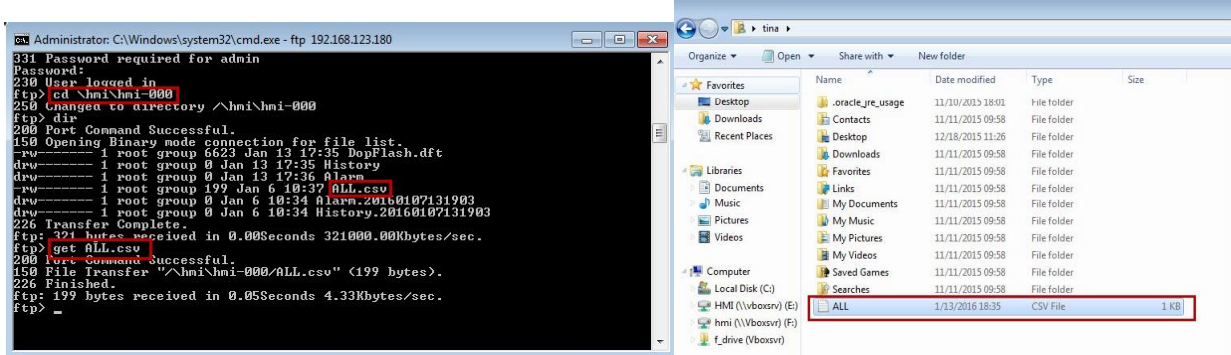
?          delete      literal     prompt      send
?          debug       ls          put         status
append    dir         mdelete    pwd         trace
ascii     disconnect  mdir       quit        type
bell      get         nget       quote       user
binary    glob        mkdir      recu       verbose
bye       hash        nls        remotehelp
cd        help        mput       rename
close     lcd         open       rmdir
ftp> dir
200 Port Command Successful.
150 Opening Binary mode connection for file list.
drw----- 1 root group 0 Jan 6 10:34 HMI
-rw----- 1 root group 11544 June 29 10:33 20150629_102748.ecm
-rw----- 1 root group 0 June 29 13:36 20150629_133643.ecm
-rw----- 1 root group 79994 Oct 5 11:18 123.DAT
-rw----- 1 root group 11544 June 29 15:27 1.ECM
-rw----- 1 root group 11544 June 29 15:27 2.ECM
```



產品通報

Newsletter

Please use get command if you wish to download the file from USB or SD card.



Please apply put command if you wish to upload the file from PC to USB or SD card.

